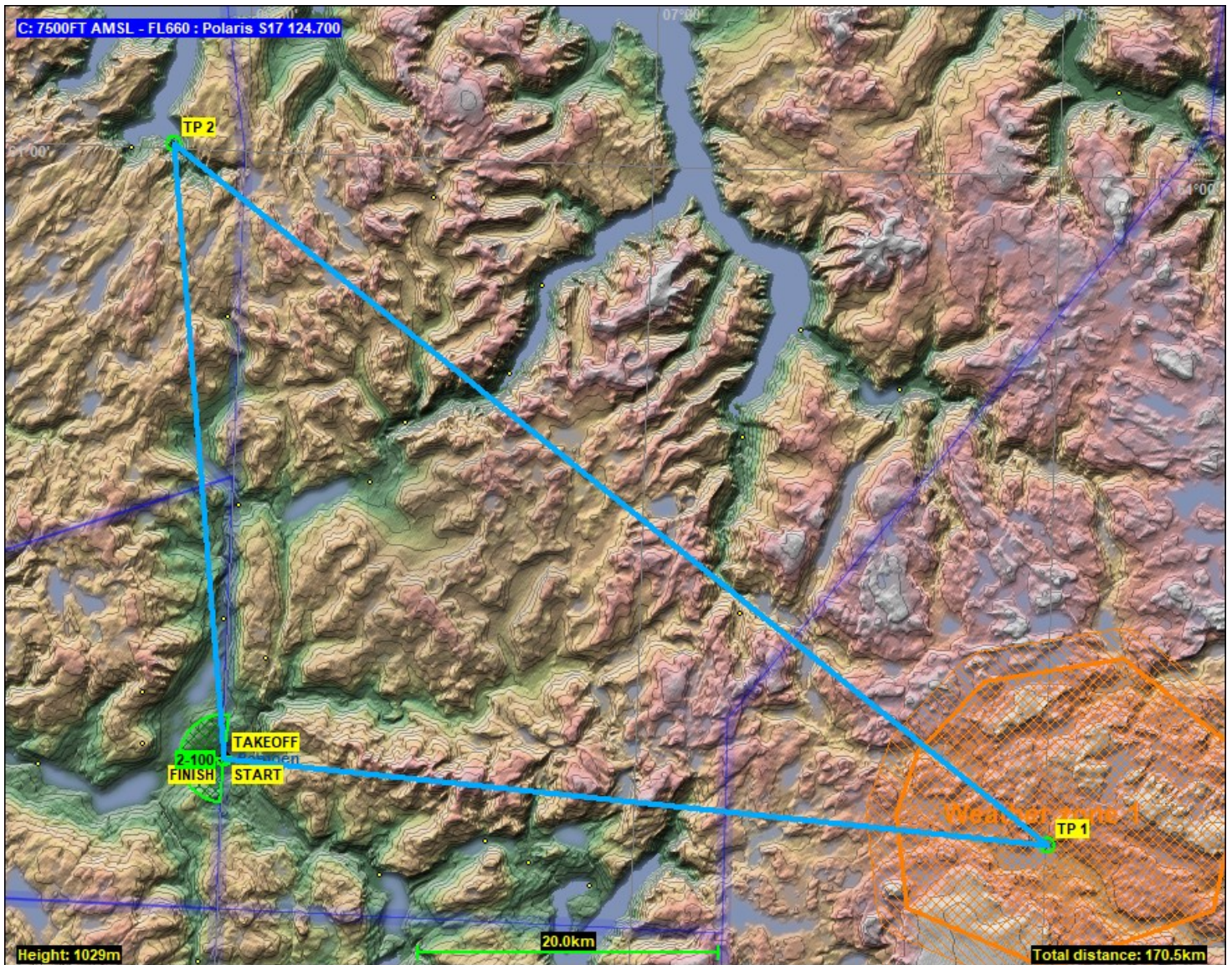


C: 7500FT AMSL - FL660 : Polaris S17 124.700



**LANDSCAPE**

SouthernNorway5

**TASK**

Type: Racing

TakeOff: Bomoen

Start: Bomoen: 000°, 0km

1. TP: Finse stasjon: 096°, 55km

2. TP: Framfjord utel.: 309°, 75km

Finish: Bomoen: 175°, 41km

**TIMING**

Date: 4/11/2026

Time: 13:00:00

Stop join: 00:00:00

RaceIn: 00:01:00

Time window: 01:00:00

**LAUNCH**

Type: Aerotow

Height: 700m AGL

**WIND**

Direction: 272°

Variation: Medium

Speed: 21km/h

Variation: Medium

Upper speed: 50km/h

Turbulence: Slight

**THERMALS**

Cloud base: 1400m AGL

Variation : Low

Strength : Moderate

Variation : Low

Inversion height : 2104m

Overdevelopment : 0%

Width : Normal

Variation : Low

Activity : Normal

Variation : Medium

Turbulence : Slight

Flats activity : High

Streeting : Normal

Bugs : Low

**WAVES**

Stability: 2

Moisture: 10%

**HIGH CLOUDS**

Coverage: 2/8

**REALISM**

Plane icons range: 5km

Thermal helpers range: 0km

Turnpoint helpers range: 0km

Allow bugwipers: Yes

Allow PDA: Yes

Allow realtime scoring: No

Allow external view: Yes

Allow padlock view: No

Allow smoke: No

Allow plane recovery: No

Allow height recovery: No

Allow midair collision recovery: Yes

**PENALTIES**

Cloud flying [per minute]: 60 p

Plane recovery: 100 p

Height recovery: 100 p

Wrong window entrance: 100 p

Window collision: 100 p

Airspace entrance: 100 p

Penalty zone entrance: 100 p

Thermal helpers [per minute]: 0 p

Maximum start ground speed: 170km/h

High start speed [per km/h]: 1 p

High/low start [per m]: not started

Low finish [per m]: 1 p